



D30 Lab
69 North Street
Portslade, Brighton
East Sussex
BN41 1DH
+44 (0) 1273 418 600
+44 (0) 1273 425 459

D30® INSOLE RANGE

D30® INSOLE RANGE

Developed with leading UK orthotics specialists, Rightstride® Orthotics, D30® Insoles are engineered to offer genuine injury preventative and rehabilitating capabilities in a packaged, ready-for-retail form.

Our three models include:

- COMFORT
- SUPPORT
- PERFORMANCE

There are many ways in which you can get injured, but whichever way, you need an injury solution. In a recent Rightstride® study of 200 subjects, pressure plates were used to measure four areas of potential correction:

- Impact pressure distribution
- Dynamic pressure attenuation
- Acceleration control
- Stability of the mid foot

72% of the subjects tested were diagnosed with a high risk of injury. These revolutionary insoles tackle these four areas and encourage a natural and dynamic transition from heel to forefoot.



Decell

EXPLODED VIEW



INSOLE INTEGRATED INSIDE SHOE

THERMOPLASTIC CHASSIS FEATURED ON THE PERFORMANCE INSOLE ENGINEERED TO ENABLE ULTIMATE ARCH SUPPORT



D30 SHOCK ABSORBING MATERIAL IN THE HEEL AND BODY ACROSS ALL RANGES



DEVELOPED WITH LEADING UK ORTHOTICS SPECIALISTS, RIGHTSTRIDE



Copyright © December 2014 D30 Lab - Proprietary

For more information on the D30® insole range, please contact your D30 Business Development Manager

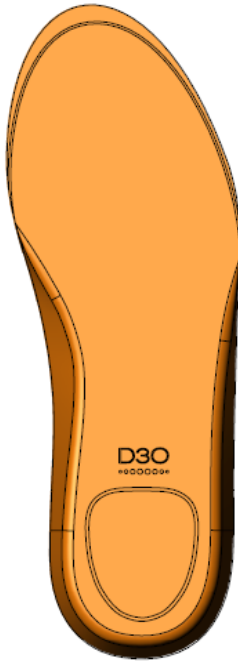
FOLLOW US: WWW.D30.COM



D30® INSOLE RANGE



COMFORT



SUPPORT



PERFORMANCE



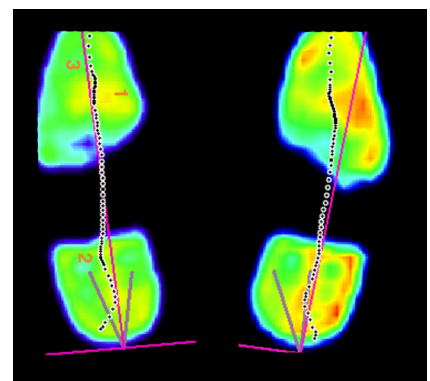
NOTE: D30® Insole bottom elevation shown.
For full product availability and dimensions, see below.

D30® Insoles - all ranges

D30 INSOLE SIZE GUIDE											
Comfort	UK	5-6		7-8		9-10		11-12		13-14	
	US	6-7		8-9		10-11		12-13		14-15	
	EU	38-39		41-42		43-45		46-47		49-51	
Support	UK	5	6	7	8	9	10	11	12	13	14
	US	6	7	8	9	10	11	12	13	14	15
	EU	38	39	41	42	43	45	46	47	49	50
Performance	UK	5	6	7	8	9	10	11	12	13	14
	US	6	7	8	9	10	11	12	13	14	15
	EU	38	39	41	42	43	45	46	47	49	50

D30®

LEADING COMPETITOR



The D30 Insole (left) reduces the pressure felt on the underside of the foot (green = low pressure). The competitor insole (right) fails to match this (red = high pressure). The acceleration control is also maintained much better by the D30 Insole, highlighted by the fact that the black dotted line is more consistent along the pink midline.*

*Testing conducted by Rightstride® Orthotics.

